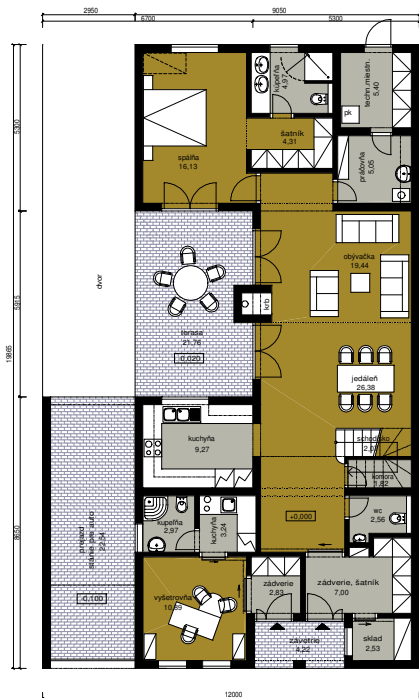
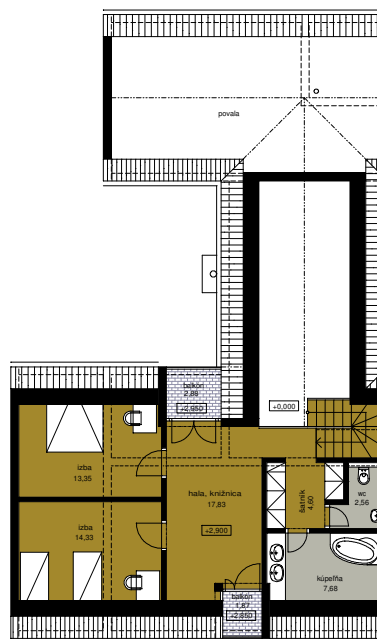


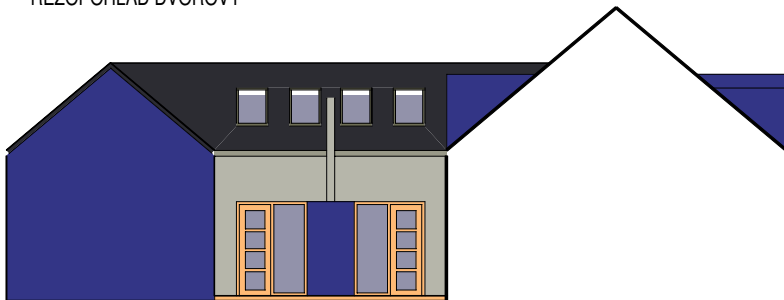
PODORYS PRÍZEMIA



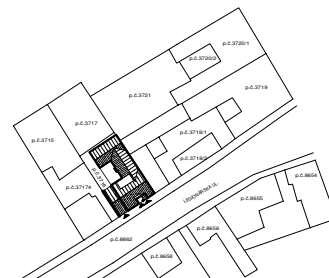
PODORYS PODKROVIA



REZOPOHĽAD DVOROVÝ



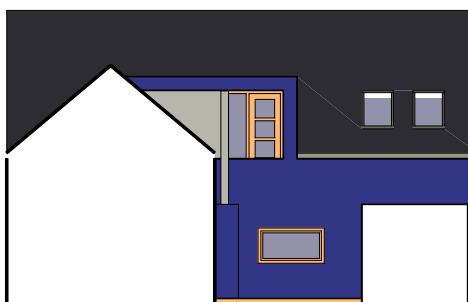
SITUÁCIA



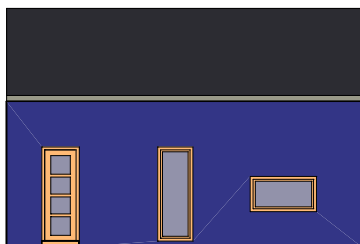
POHĽAD JUŽNÝ



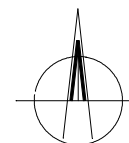
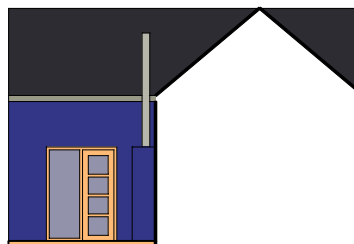
REZOPOHĽAD SEVERNÝ



POHĽAD SEVERNÝ



REZOPOHĽAD JUŽNÝ



magarch

ATELIER ARCHITECTURY

Dipl. Ing. arch.  
Štefan Magula

NOVOSTAVBA RODINNÉHO DOMU

TRNAVA, LEGIONÁRSKA UL., p.č. 3716

investor  
architekt projektu

ING.ŠTEFAN MINAROVIČ  
ING.ARCH.ŠTEFAN MAGULA

dátum

03/2009